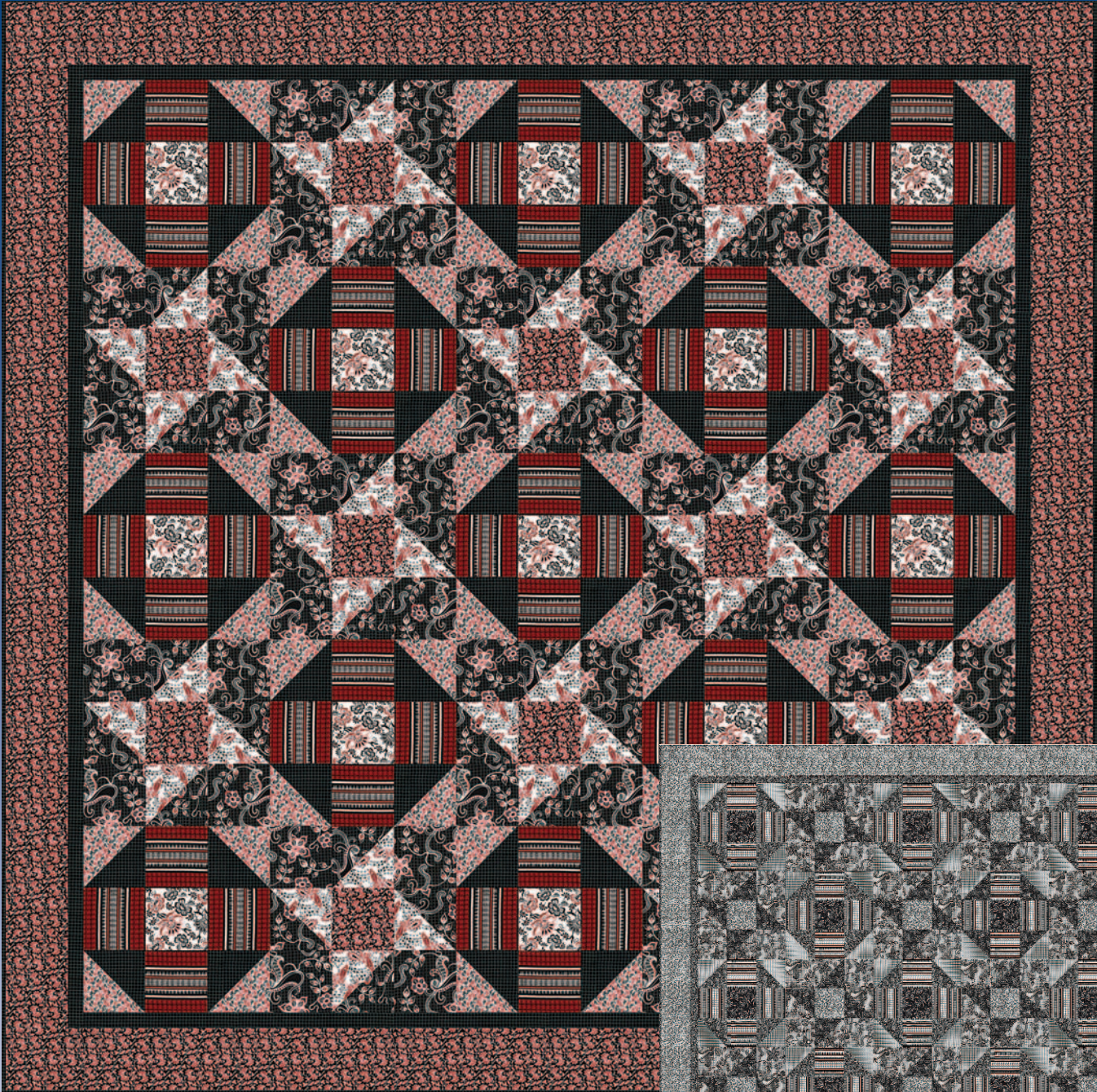
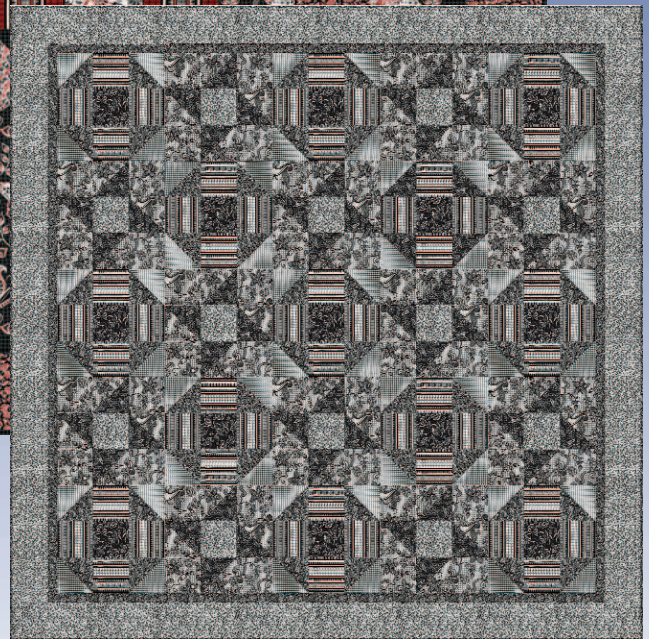


Calais II



Red

Quilts designed by
Janet Houts for Blank Quilting
Finished Size is 70" x 70"



White



TM

Calais II

Finished Size: 70" x 70"

Block Size: 12"

Quilt designed by Janet Houts for Blank Quilting

All seam allowances are 1/4". Please read all directions before beginning and press carefully after each step.

Fabric Requirements:

Red Version

Fabric A: 1-1/4 yard of BTR-4770 Red
Fabric B: 1/3 yard of BTR-4771 Red
Fabric C: 1/2 yard of BTR-4772 Red
Fabric D: 1-1/2 yards of BTR-4773 Red
Fabric E: 7/8 yard of BTR-4774 Red
Fabric F: 1/2 yard of BTR-4775 Red
Fabric G: 7/8 yard of BTR-4776 Black
Backing: 4-1/3 yards of BTR-4773 Red
Binding: 5/8 yard of BTR-4776 Black

White Version

Fabric A: 1-1/4 yard of BTR-4770 White
Fabric B: 1/3 yard of BTR-4771 Black
Fabric C: 1/2 yard of BTR-4772 Black
Fabric D: 1-1/2 yards of BTR-4773 White
Fabric E: 7/8 yard of BTR-4774 White
Fabric F: 1/2 yard of BTR-4775 White
Fabric G: 7/8 yard of BTR-4773 Black
Backing: 4-13 yards of BTR-4775 White
Binding: 5/8 yard of BTR-4773 Black

Cutting Directions:

Fabric A: Cut (48) 4-1/2" squares
 Cut (24) 4-7/8" squares
Fabric B: Cut (13) 4-1/2" squares
Fabric C: Cut (24) 4-7/8" squares
Fabric D: Cut (12) 4-1/2" squares
 Cut (2) 4-1/2" x 62-1/2" strips
 Cut (2) 4-1/2" x 70-1/2" strips

Fabric E: Cut (52) 4-1/2" squares, fussy cut
Fabric F: Cut (26) 4-7/8" squares
Fabric G: Cut (26) 4-7/8" squares
 Cut (2) 1-1/2" x 60-1/2" strips
 Cut (2) 1-1/2" x 62-1/2" strips
Binding: Cut (8) 2-1/4" strips
Backing: Cut and piece fabric to fit quilt top with 4" overlap

Block A Assembly

1. Layer one 4-7/8" Fabric F square and one 4-7/8" Fabric G square, right sides together. Draw a diagonal line from corner to corner and sew 1/4" on each side of drawn line. Cut apart on drawn line to make two half-square triangle squares (fig. 1). Repeat, to make four half-square triangles.
2. Sew two half-square triangles to both sides of one 4-1/2" Fabric E square, with Fabric G triangles facing toward horizontal stripes. Repeat, for top and bottom rows of block. Sew two 4-1/2" Fabric E squares, with stripes in vertical position, to both sides of one 4-1/2" Fabric B square for middle row of block. Sew the three rows together (fig. 2). Make 13 blocks.

Block B Assembly

3. Layer one 4-7/8" Fabric A square and one 4-7/8" Fabric C square, right sides together. Follow step 1 directions to make two half-square triangle squares. Repeat, to make four half-square triangles.
4. Sew two Fabric A squares to both sides of one half-square triangle, with Fabric C triangle facing toward right-hand square (fig. 3). Repeat, for top and bottom rows of block. Sew remaining two half-square triangles to both sides of one 4-1/2" Fabric D square, with Fabric C triangle facing towards center square, for middle row of block. Sew the three rows together (fig. 4). Make 12 blocks.

Quilt Top Assembly

5. Beginning with Block A, alternate sewing blocks A and B together, five blocks across for row one. Row two begins with Block B. Repeat, alternating rows for a total of five rows (fig. 5).
6. Sew two 1-1/2" x 60-1/2" Fabric G strips to left and right sides of quilt top. Sew two 1-1/2" x 62-1/2" Fabric G strips to top and bottom of quilt top.
7. Sew two 4-1/2" x 62-1/2" Fabric D strips to left and right sides of quilt top. Sew two 4-1/2" x 70-1/2" Fabric D strips to top and bottom to complete the quilt top.
8. Layer, quilt and bind as desired.

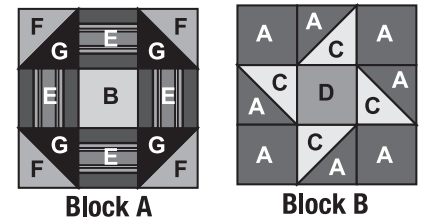


Figure 1

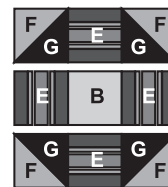


Figure 2



Figure 3

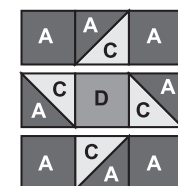


Figure 4

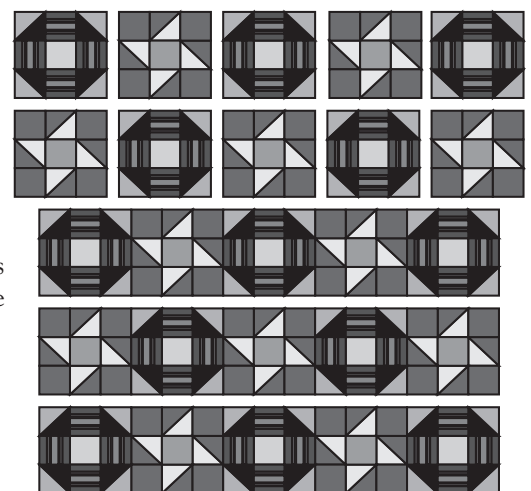


Figure 5

While all possible care has been taken to ensure the accuracy of this pattern, we are not responsible for printing errors or the way in which individual work varies.



© 2007 Blank Quilting • All rights reserved
 65 West 36th St., New York, NY 10018 • Toll Free: 1-888-442-5265 • Fax: 1-212-563-4733 • www.BlankQuilting.com